

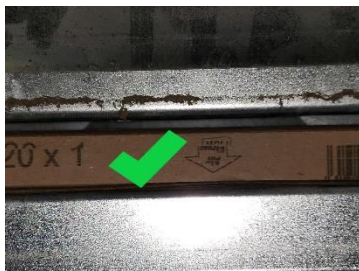


## HOME MAINTENANCE GUIDE

# FURNACE



Locate the furnace. It is typically closed off and looks like a closet. On the main unit, there is a slot for the filter. Note the direction of air flow. Remove the old filter and slide a new filter in place, then close the cover.

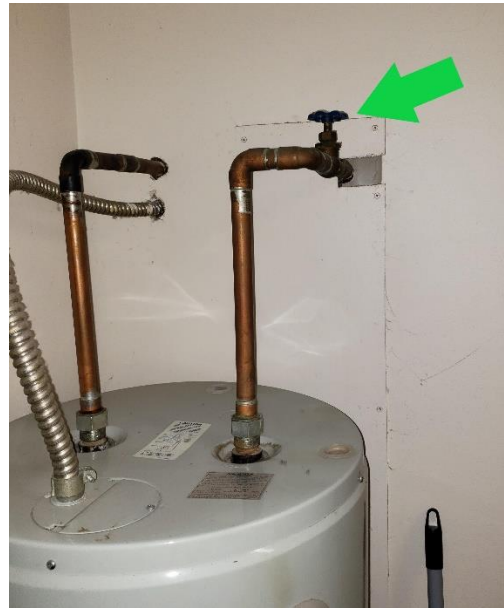
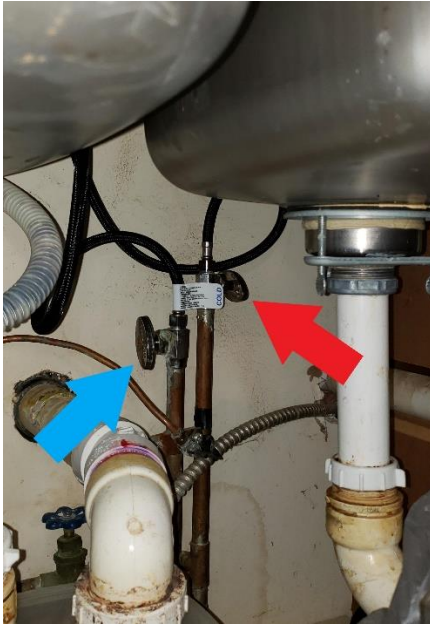


*This filter is the correct way for air flow.*



*This filter is not.*

## WATER SHUTOFF



Shutting off the water to a leaking faucet can save water and prevent further damage. Above are a few common examples. Under sinks will be both a hot and cold water line, while behind toilets there will be only cold. Hot water heaters have a shutoff controlling all hot water for the house. It is also important to know the main water shutoff.

# BREAKER BOX



When power goes out, especially in only one room or to outlet, it is often due to a tripped breaker. Locating the breaker box should be easy. Check for a tripped breaker. If there is one or more, switch the breaker off then on again resets it and should restore power.



A tripped breaker will be between off and on.

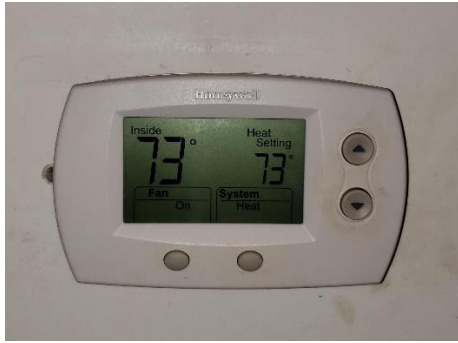


The breaker is off.



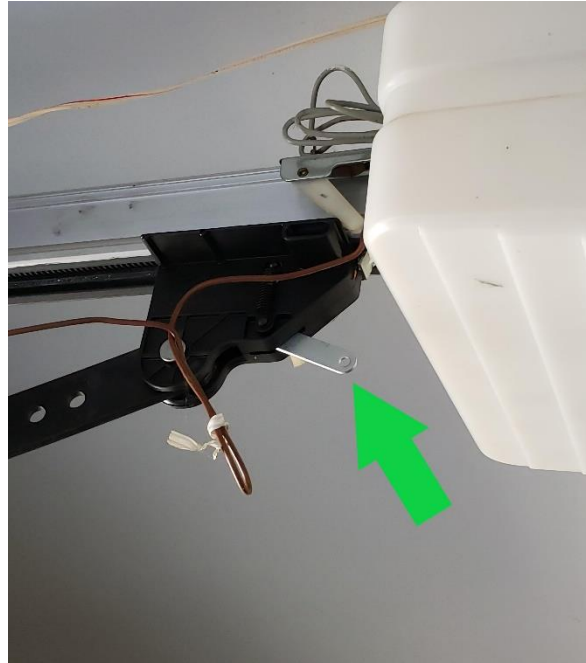
These breakers are on.

## THERMOSTAT



The thermostat allows you to control the furnace temperature setting and sometimes the AC. Replacing the batteries will keep it functional.

## GARAGE DOOR



If the garage door opener stops working, there is a lever which disengages the door from the system, allowing it to be opened and closed manually.